

GENERAL NOTES AND SPECIFICATIONS:

1. ALL WORK HEREIN SHALL BE DONE IN ACCORDANCE WITH THE PLANS AND SPECIFICATIONS.
2. ELECTRICAL WORKS SHALL BE IN ACCORDANCE WITH THE LATEST EDITION OF THE PHILIPPINE ELECTRICAL CODE, MUNICIPAL/CITY LAWS AND ORDINANCES AND THE REGULATIONS OF THE LOCAL POWER AND TELEPHONE COMPANY.
3. THE JOB SHALL BE EXECUTED IN THE MOST THOROUGH PROMPT AND WORKMANLIKE MANNER EMPLOYING STANDARD TOOLS, EQUIPMENT, METHODS AND GOOD ENGINEERING PRACTICE. THE JOB SHALL BE DONE IN ALL ASPECTS AS REQUIRED PER PLANS AND SPECIFICATIONS AND FIELD FOR OPERATION.
4. THE DRAWINGS AND SPECIFICATIONS ARE INTENDED TO REPRESENT A GENERAL LAYOUT AND BROAD OUTLINE DESCRIPTION OF THE PROJECT, BUT DOES NOT NEGOTIATE THE ACTUAL LOCATION, LEVELS AND DISTANCES OF THE EQUIPMENT. THE CONTRACTOR IS HEREBY REQUIRED TO MAKE SUCH ADJUSTMENTS AT THE JOBSITE THAT ARE GOVERNED BY THE ACTUAL FIELD CONDITION.
5. SERVICE POLARITY TO THE BUILDING FROM THE POWER SOURCE SHALL BE AS FOLLOWS:
6. SERVICE ENTRANCE WIRING SHALL BE RIGID STEEL CONDUIT (RSC).
7. FEEDER WIRING SHALL BE ELECTRICAL METAL TUBING (EMT).
8. BRANCH CIRCUIT WIRING ELECTRICAL METAL TUBING (EMT).
9. BRANCH CIRCUIT WIRING EMERGENCY CONDUIT SHALL BE IN PVC PIPE WITH ADEQUATE GROUND WIRE FOR EQUIPMENT PROTECTION.
10. LIGHT SWITCHES SHALL BE 15A 2-POLE.
11. ALL MATERIALS SHALL BE BRAND NEW AND OF APPROVED TYPE FOR CONNECTION AND FINISHES IDENTIFIED.
12. DEVICES, FIXTURES LOCATED OUTDOOR SHALL BE WEATHER PROOF TYPE.
13. MOUNTING HEIGHTS ARE:

- A. LIGHT SWITCHES 4.0M ABOVE FINISH FLOOR
- B. CONDUIT OUTLETS 3.0M ABOVE FINISH FLOOR
- C. CONDUIT OUTLETS 3.0M ABOVE FINISH FLOOR
- D. CONDUIT OUTLETS 3.0M ABOVE FINISH FLOOR
- E. CONDUIT OUTLETS 3.0M ABOVE FINISH FLOOR
- F. CONDUIT OUTLETS 3.0M ABOVE FINISH FLOOR
- G. CONDUIT OUTLETS 3.0M ABOVE FINISH FLOOR
- H. CONDUIT OUTLETS 3.0M ABOVE FINISH FLOOR
- I. CONDUIT OUTLETS 3.0M ABOVE FINISH FLOOR
- J. CONDUIT OUTLETS 3.0M ABOVE FINISH FLOOR
- K. CONDUIT OUTLETS 3.0M ABOVE FINISH FLOOR
- L. CONDUIT OUTLETS 3.0M ABOVE FINISH FLOOR
- M. CONDUIT OUTLETS 3.0M ABOVE FINISH FLOOR
- N. CONDUIT OUTLETS 3.0M ABOVE FINISH FLOOR
- O. CONDUIT OUTLETS 3.0M ABOVE FINISH FLOOR
- P. CONDUIT OUTLETS 3.0M ABOVE FINISH FLOOR
- Q. CONDUIT OUTLETS 3.0M ABOVE FINISH FLOOR
- R. CONDUIT OUTLETS 3.0M ABOVE FINISH FLOOR
- S. CONDUIT OUTLETS 3.0M ABOVE FINISH FLOOR
- T. CONDUIT OUTLETS 3.0M ABOVE FINISH FLOOR
- U. CONDUIT OUTLETS 3.0M ABOVE FINISH FLOOR
- V. CONDUIT OUTLETS 3.0M ABOVE FINISH FLOOR
- W. CONDUIT OUTLETS 3.0M ABOVE FINISH FLOOR
- X. CONDUIT OUTLETS 3.0M ABOVE FINISH FLOOR
- Y. CONDUIT OUTLETS 3.0M ABOVE FINISH FLOOR
- Z. CONDUIT OUTLETS 3.0M ABOVE FINISH FLOOR

14. ANY DISCREPANCY BETWEEN THE PLANS AND SPECIFICATIONS SHALL BE EVIDENT.
15. THE ELECTRICAL WORK SHALL BE DONE UNDER THE SUPERVISION OF THE ELECTRICAL ENGINEER.
16. THE CONTRACTOR SHALL BE RESPONSIBLE FOR THE LOCATION OF THE WORK AND/OR FOR THE PROTECTION OF THE EXISTING WORK.
17. THE CONTRACTOR SHALL BE RESPONSIBLE FOR THE PROTECTION OF THE EXISTING WORK.
18. THE CONTRACTOR SHALL BE RESPONSIBLE FOR THE PROTECTION OF THE EXISTING WORK.
19. THE CONTRACTOR SHALL BE RESPONSIBLE FOR THE PROTECTION OF THE EXISTING WORK.
20. THE CONTRACTOR SHALL BE RESPONSIBLE FOR THE PROTECTION OF THE EXISTING WORK.
21. THE CONTRACTOR SHALL BE RESPONSIBLE FOR THE PROTECTION OF THE EXISTING WORK.
22. THE CONTRACTOR SHALL BE RESPONSIBLE FOR THE PROTECTION OF THE EXISTING WORK.

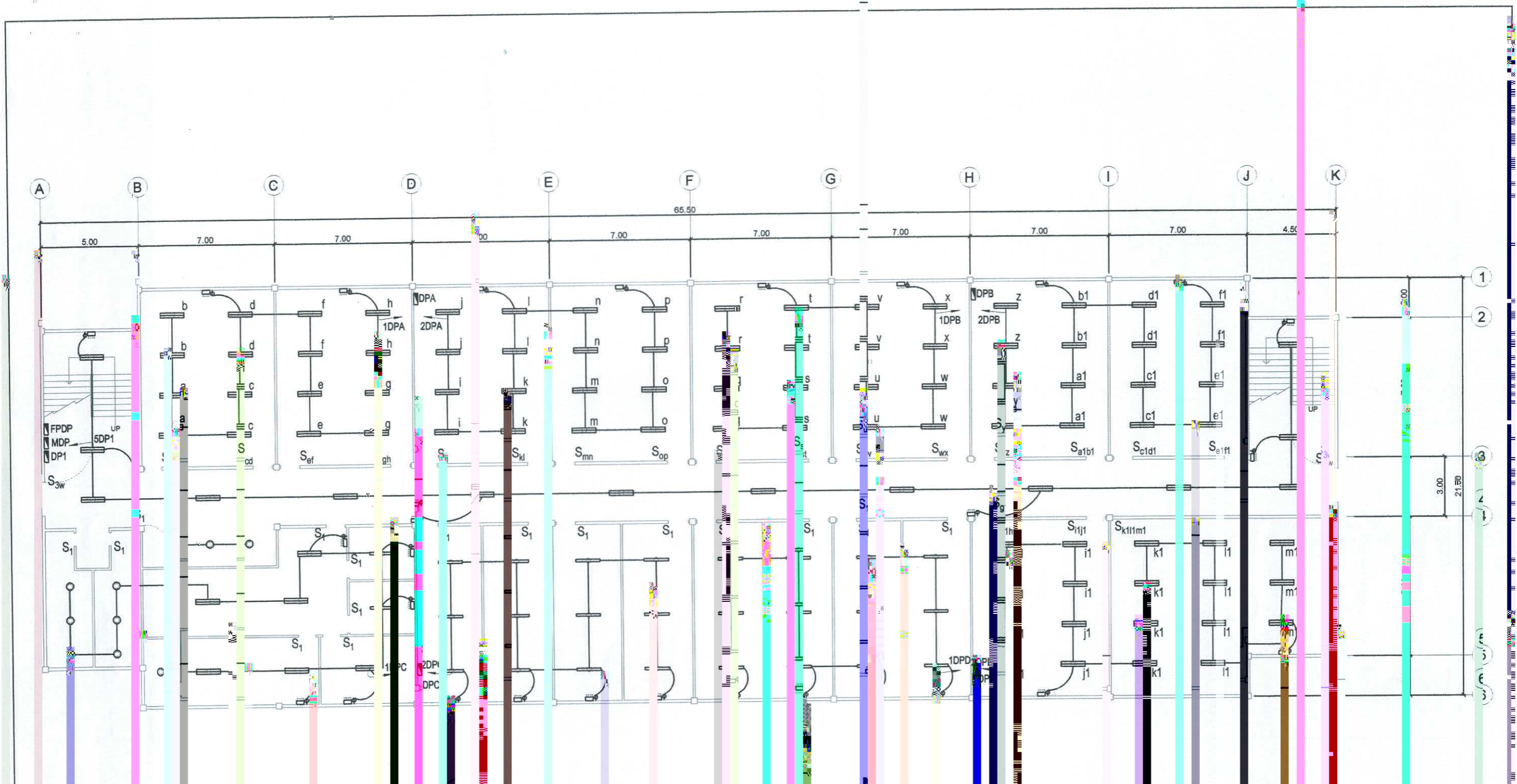
LEGEND AND SYMBOLS:

	LED DOWNLIGHT, VERTICAL RECESSED ROUND, 12W w/ 6" HOUSING FIXTURE		CIRCUIT BREAKER WITH NEMA 3R METAL ENCLOSURE
	1-9W LED TUBE LIGHT WITH DIFFUSER, 2 FT. LENGTH (FL)		ACU CONDENSER UNIT DOOR UNIT WITH NEMA 3R CIRCUIT BREAKER
	2-9W LED TUBE LIGHT WITH DIFFUSER, 2 FT. LENGTH (FL)		ACU WALL/FLOOR MOUNTED UNIT SPLIT TYPE, INDOOR
	3-9W LED TUBE LIGHT WITH DIFFUSER, 2 FT. LENGTH (FL)		2.0 mm² THHN
	4-9W LED TUBE LIGHT WITH DIFFUSER, 2 FT. LENGTH (FL)		3.5 mm² THHN
	EMERGENCY LIGHT (EL)		CIRCUIT HOMERUN
	ONE GANG SWITCH		CIRCUIT NUMBER
	TWO GANG SWITCH		PANEL BOARD
	THREE GANG SWITCH		SERVICE ENTRANCE
	THREE GANG SWITCH WITH CE		KILOWATT HOUR METER
	TWO GANG CONVENIENCE OUTLET		CONCRETE ENCASMENT
	WET AREA GANGLER CONVENIENCE OUTLET		CALCULATED CHAMBER
	GANGLER CONVENIENCE OUTLET (PANEL MOUNTED)		DISTRIBUTION TRANSFORMER
	GANGLER SPECIAL POWER OUTLET FOR LIGHTING		PRIMARY CONDUIT
	THREE GANG CONVENIENCE OUTLET		SERVICE ENTRANCE WITH CONNECTION
	JUNCTION BOX		SECONDARY LINE



PROJECT NO: _____
 DATE: _____
 DRAWN BY: _____
 CHECKED BY: _____
 APPROVED BY: _____
 ELECTRICAL ENGINEER: _____
 PROJECT LOCATION: _____
 PROJECT NAME: _____
 PROJECT OWNER: _____
 PROJECT AGENCY: _____
 SHEET NO: _____

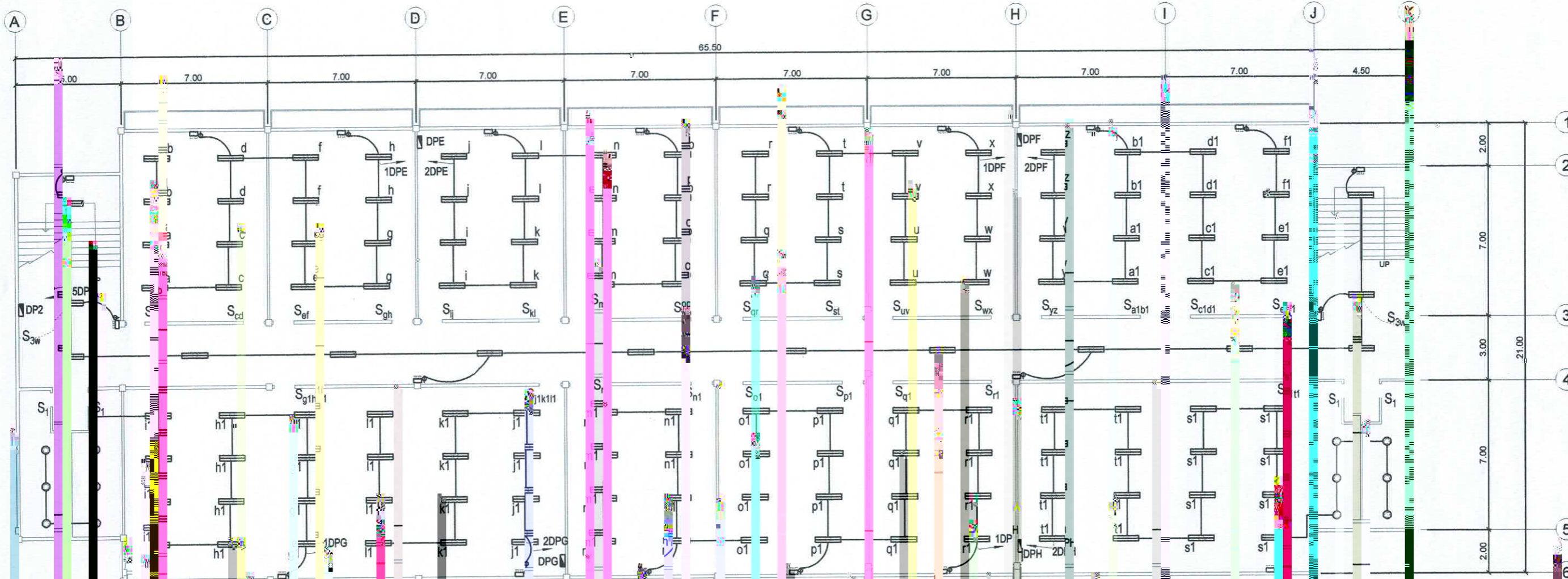
ELECTRICAL POWER SYSTEM FOR THE
 BUILDING OF THE UNIVERSITY
 CITY



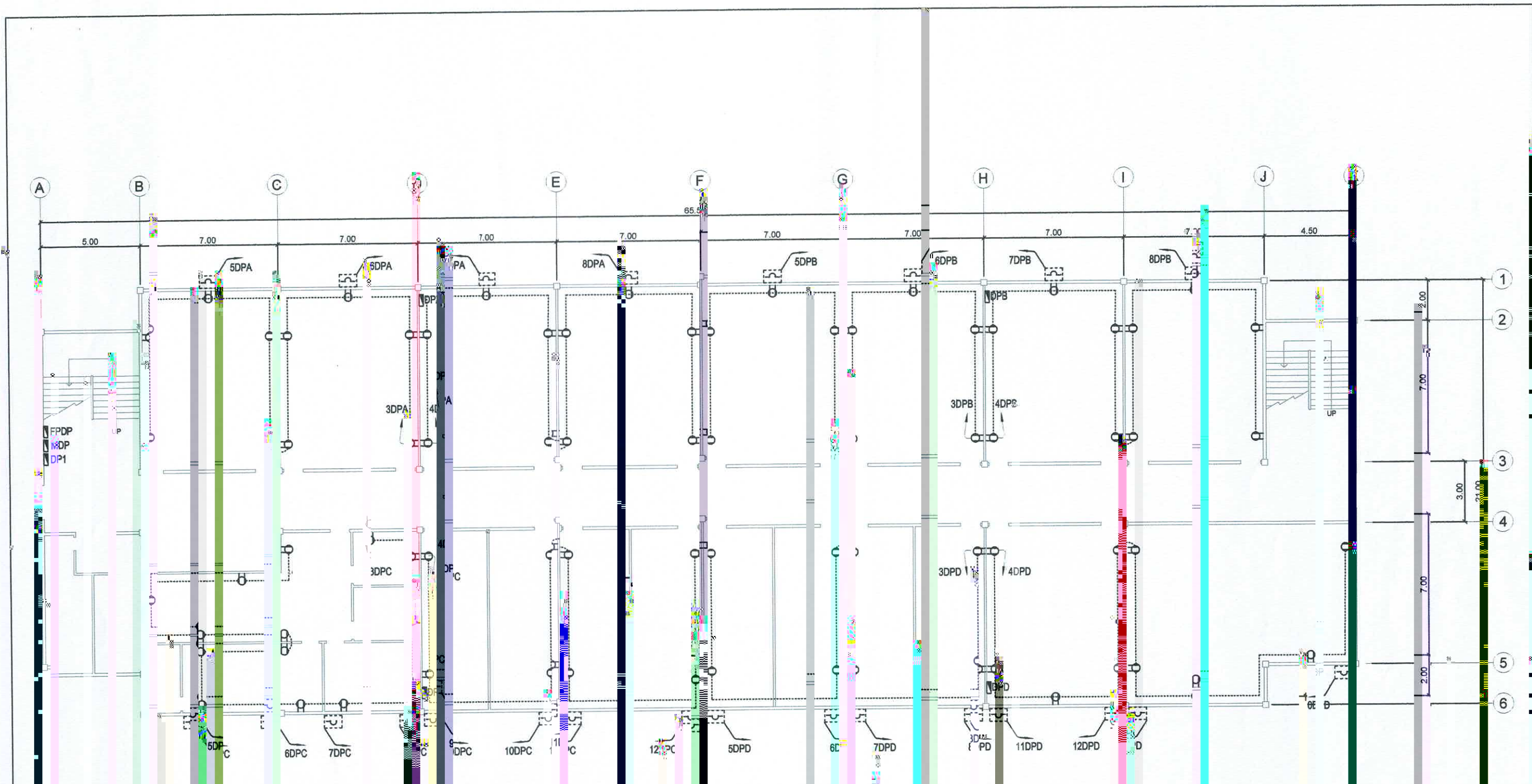
GROUND FLOOR LIGHTING LAYOUT

SCALE 1" = 10' - 0"

PREPARED BY: R. J. R. ANCHOV PDU	END USER: R. M. CAJIGA CAMPUS ADMINSTR	REVIEWED BY: R. P. REYES PROF. ELEC. ENGINEER	DESIGNED BY: M. J. TEODORO PDU	CHECKED BY: J. X. VPASS CVU	REC. APPROVAL: M. J. TEODORO VPPD	PROJECT TITLE/LOCATION: IMPROVEMENT OF ELECTRICAL POWER SYSTEM OF FIVE STOREY ACADEMIC BUILDING AT CVU PHOOD CAMPUS CAVITE STATE UNIVERSITY	IMPLEMENTING AGENCY: CAVITE STATE UNIVERSITY	SHEET NO.: E-2
--	--	---	--	---------------------------------------	---	--	---	-------------------

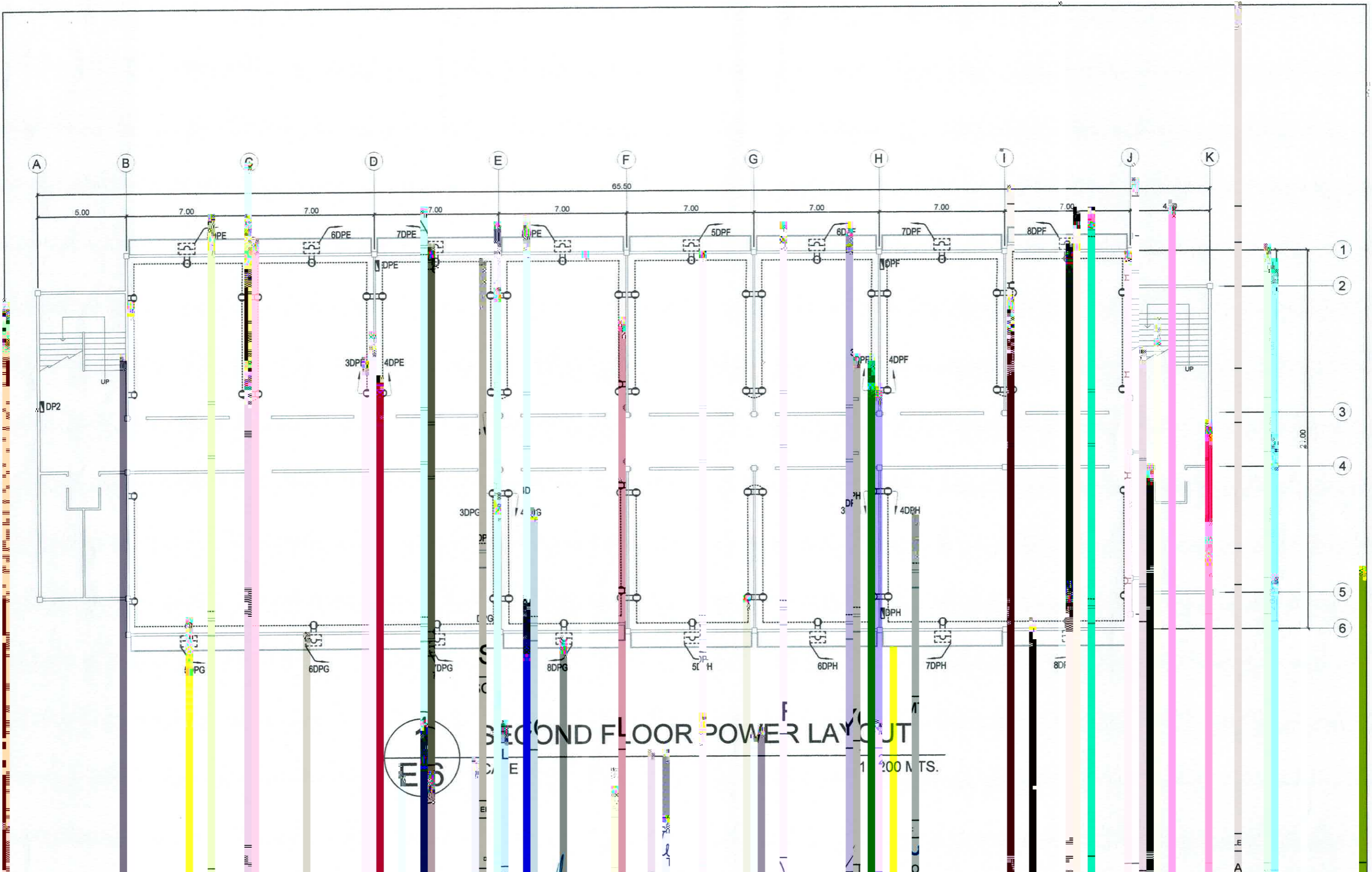


PREPARED BY: 	END USER: 	CHECKED BY: 	ENDORSED BY: 	REVIEWED BY: 	RECOMMENDED BY: 	APPROVED BY: 	PROJECT TITLE/LOCATION: MOVEMENT OF ELECTRICAL POWER SYSTEMS OF FIVE FLOOR ACQUISITION OF CAVITE STATE UNIVERSITY	IMPLEMENTING AGENCY: CAVITE STATE UNIVERSITY	SHEET NO.: - 3
------------------	---------------	-----------------	------------------	------------------	---------------------	------------------	--	---	-------------------



1 GROUND FLOOR POWER LAYOUT
 E5 SCALE 1:200 MTS.

PREF. BY: R. S.	DESIGNED BY: R. S.	CHECKED BY: R. S.	REVISIONS: NO. 01 DATE: 10/15/2015	REVIEWED BY: R. S.	APPROVED BY: R. S.	PROJECT LOCATION: DEPARTMENT OF ELECTRICAL ENGINEERING UNIVERSITY OF CALIFORNIA, BAKERSFIELD	IMPLEMENTING AGENCY: CALIFORNIA STATE UNIVERSITY, BAKERSFIELD	SHEET NO.: E-5
--------------------	-----------------------	----------------------	--	-----------------------	-----------------------	--	--	-------------------



SECOND FLOOR POWER LAYOUT



	PREPARED BY:	END USER:	REVIEWED BY:	APPROVED BY:	PROJECT TITLE/LOCATION:	IMPLEMENTING AGENCY:	SHEET NO.:
	R. J. R. SANCHEZ EDU OVPPD	R. M. O. AJ... CAMPUS ADMINISTRATOR	R. P. PEÑA PROF. ELEC. ENGINEER	S. B. E... HEAD	J. X. B... VPASS	IMPROVEMENT OF ELECTRICAL POWER SYSTEM IN THE FIVE STOREY SEMI-CENTRAL BUILDING AT CVSU CAMPUS	CAVITE STATE UNIVERSITY

PANEL: DPE (DISTRIBUTION PANEL 1)
 PHASE: 3
 VOLTS: 230

CABLE: 3 - 50.0 SQMM THHN-1 - 14.0 SQMM THW
 CONDUIT: IMC, 40 MM DIA.

ENCLOSURE: NEMA 1
 MOUNTING: SURFACE

CKT NO.	CIRCUIT DESCRIPTION	NO OF OUTLET	WATTAGE	VOLTAGE	LOAD IN RATING			CIRCUIT PROTECTION			Size of Conductor SQ. MM THW (G)	Size of Conduit in Me	Color Code
					AB	CA	BC	CIRCUIT BREAKER RATING	SQ. MM THHN	SQ. MM THW (G)			
1	LIGHTING OUTLET	1	1800	30			7.83	15AT, 2P, 230V, MCCB	2.0	2.0	1R, 1B		
2	LIGHTING OUTLET	1	1800	30			7.83	15AT, 2P, 230V, MCCB	2.0	2.0	1R, 1B		
3	CONVENIENCE OUTLET	1	2000	30			8.70	20AT, 2P, 230V, MCCB	2.5	2.5	1Y, 1R		
4	CONVENIENCE OUTLET	1	2000	30			8.70	20AT, 2P, 230V, MCCB	2.5	2.5	1Y, 1R		
5	AGU POWER OUTLET	1	3000	30			23	50AT, 2P, 230V, MCCB	3.0	3.0	1B, 1Y		
6	AGU POWER OUTLET	1	3000	30			23	50AT, 2P, 230V, MCCB	3.0	3.0	1B, 1Y		
7	AGU POWER OUTLET	1	3000	30			23	50AT, 2P, 230V, MCCB	3.0	3.0	1B, 1Y		
8	AGU POWER OUTLET	1	3000	30			23	50AT, 2P, 230V, MCCB	3.0	3.0	1B, 1Y		
TOTAL			19800	30			46	150AT, 3P, 230V, MCCB	3.0	3.0	1B, 1Y		

NOTE:
 1- Means Ground Wire
 1R- Color RED
 1B- Color BLACK
 1Y- Color YELLOW
 1G- Color GREEN

This Electrical Design is good only for the above connected loads. Any additional electrical load connection in the future is not allowed. Except red line, any additional electrical load connection in the future will be done.

PANEL: DPF (DISTRIBUTION PANEL 2)
 PHASE: 3
 VOLTS: 230

CABLE: 3 - 50.0 SQMM THHN-1 - 14.0 SQMM THW
 CONDUIT: IMC, 40 MM DIA.

ENCLOSURE: NEMA 1
 MOUNTING: SURFACE

CKT NO.	CIRCUIT DESCRIPTION	NO OF OUTLET	WATTAGE	VOLTAGE	LOAD IN RATING			CIRCUIT PROTECTION			Size of Conductor SQ. MM THW (G)	Size of Conduit in Me	Color Code
					AB	CA	BC	CIRCUIT BREAKER RATING	SQ. MM THHN	SQ. MM THW (G)			
1	LIGHTING OUTLET	1	1800	30			7.83	15AT, 2P, 230V, MCCB	2.0	2.0	1R, 1B		
2	LIGHTING OUTLET	1	1800	30			7.83	15AT, 2P, 230V, MCCB	2.0	2.0	1R, 1B		
3	CONVENIENCE OUTLET	1	2000	30			8.70	20AT, 2P, 230V, MCCB	2.5	2.5	1Y, 1R		
4	CONVENIENCE OUTLET	1	2000	30			8.70	20AT, 2P, 230V, MCCB	2.5	2.5	1Y, 1R		
5	AGU POWER OUTLET	1	3000	30			23	50AT, 2P, 230V, MCCB	3.0	3.0	1B, 1Y		
6	AGU POWER OUTLET	1	3000	30			23	50AT, 2P, 230V, MCCB	3.0	3.0	1B, 1Y		
7	AGU POWER OUTLET	1	3000	30			23	50AT, 2P, 230V, MCCB	3.0	3.0	1B, 1Y		
8	AGU POWER OUTLET	1	3000	30			23	50AT, 2P, 230V, MCCB	3.0	3.0	1B, 1Y		
TOTAL			19800	30			46	150AT, 3P, 230V, MCCB	3.0	3.0	1B, 1Y		

NOTE:
 1- Means Ground Wire
 1R- Color RED
 1B- Color BLACK
 1Y- Color YELLOW
 1G- Color GREEN

This Electrical Design is good only for the above connected loads. Any additional electrical load connection in the future is not allowed. Except red line, any additional electrical load connection in the future will be done.

PANEL: DPE (DISTRIBUTION PANEL 3)
 PHASE: 3
 VOLTS: 230

CABLE: 3 - 50.0 SQMM THHN-1 - 14.0 SQMM THW
 CONDUIT: IMC, 40 MM DIA.

ENCLOSURE: NEMA 1
 MOUNTING: SURFACE

CKT NO.	CIRCUIT DESCRIPTION	NO OF OUTLET	WATTAGE	VOLTAGE	LOAD IN RATING			CIRCUIT PROTECTION			Size of Conductor SQ. MM THW (G)	Size of Conduit in Me	Color Code
					AB	CA	BC	CIRCUIT BREAKER RATING	SQ. MM THHN	SQ. MM THW (G)			
1	LIGHTING OUTLET	1	1800	30			8.26	15AT, 2P, 230V, MCCB	2.0	2.0	1R, 1B		
2	LIGHTING OUTLET	1	1800	30			8.26	15AT, 2P, 230V, MCCB	2.0	2.0	1R, 1B		
3	CONVENIENCE OUTLET	1	1400	30			2.0	15AT, 2P, 230V, MCCB	1.0	1.0	1R, 1B		
4	CONVENIENCE OUTLET	1	1000	30			2.0	15AT, 2P, 230V, MCCB	1.0	1.0	1R, 1B		
5	AGU POWER OUTLET	1	3000	30			23	50AT, 2P, 230V, MCCB	3.0	3.0	1B, 1Y		
6	AGU POWER OUTLET	1	3000	30			23	50AT, 2P, 230V, MCCB	3.0	3.0	1B, 1Y		
7	AGU POWER OUTLET	1	3000	30			23	50AT, 2P, 230V, MCCB	3.0	3.0	1B, 1Y		
8	AGU POWER OUTLET	1	3000	30			23	50AT, 2P, 230V, MCCB	3.0	3.0	1B, 1Y		
TOTAL			17600	30			46	150AT, 3P, 230V, MCCB	3.0	3.0	1B, 1Y		

NOTE:
 1- Means Ground Wire
 1R- Color RED
 1B- Color BLACK
 1Y- Color YELLOW
 1G- Color GREEN

This Electrical Design is good only for the above connected loads. Any additional electrical load connection in the future is not allowed. Except red line, any additional electrical load connection in the future will be done.

PANEL: DPH (DISTRIBUTION PANEL 4)
 PHASE: 3
 VOLTS: 230

CABLE: 3 - 50.0 SQMM THHN-1 - 14.0 SQMM THW
 CONDUIT: IMC, 40 MM DIA.

ENCLOSURE: NEMA 1
 MOUNTING: SURFACE

CKT NO.	CIRCUIT DESCRIPTION	NO OF OUTLET	WATTAGE	VOLTAGE	LOAD IN RATING			CIRCUIT PROTECTION			Size of Conductor SQ. MM THW (G)	Size of Conduit in Me	Color Code
					AB	CA	BC	CIRCUIT BREAKER RATING	SQ. MM THHN	SQ. MM THW (G)			
1	LIGHTING OUTLET	27	4500	230			11.74	15AT, 2P, 230V, MCCB	2-2.0	2-2.0	1R, 1B		
2	LIGHTING OUTLET	23	4500	230			10.00	15AT, 2P, 230V, MCCB	2-2.0	2-2.0	1R, 1B		
3	CONVENIENCE OUTLET	10	2000	230			6.70	20AT, 2P, 230V, MCCB	2-3.5	2-3.5	1Y, 1R		
4	CONVENIENCE OUTLET	6	1000	230			5.22	20AT, 2P, 230V, MCCB	2-3.5	2-3.5	1Y, 1R		
5	AGU POWER OUTLET	1	3000	230			23	50AT, 2P, 230V, MCCB	2-8.0	2-8.0	1B, 1Y		
6	AGU POWER OUTLET	1	3000	230			23	50AT, 2P, 230V, MCCB	2-8.0	2-8.0	1B, 1Y		
7	AGU POWER OUTLET	1	3000	230			23	50AT, 2P, 230V, MCCB	2-8.0	2-8.0	1B, 1Y		
8	AGU POWER OUTLET	1	3000	230			23	50AT, 2P, 230V, MCCB	2-8.0	2-8.0	1B, 1Y		
TOTAL			20000	230			46	150AT, 3P, 230V, MCCB	3-50.0	3-50.0	1B, 1Y		

NOTE:
 1- Means Ground Wire
 1R- Color RED
 1B- Color BLACK
 1Y- Color YELLOW
 1G- Color GREEN

This Electrical Design is good only for the above connected loads. Any additional electrical load connection in the future is not allowed. Except red line, any additional electrical load connection in the future will be done.

PANEL: 2 (DISTRIBUTION PANEL 2)
 PHASE: 3
 VOLTS: 230

CABLE: 3 - 50.0 SQMM THHN-1 - 14.0 SQMM THW
 CONDUIT: IMC, 40 MM DIA.

ENCLOSURE: NEMA 1
 MOUNTING: SURFACE

CKT NO.	CIRCUIT DESCRIPTION	NO OF OUTLET	WATTAGE	VOLTAGE	LOAD IN RATING			CIRCUIT PROTECTION			Size of Conductor SQ. MM THW (G)	Size of Conduit in Me	Color Code
					AB	CA	BC	CIRCUIT BREAKER RATING	SQ. MM THHN	SQ. MM THW (G)			
1	DISTRIBUTION PANEL	1	1750	230			2.95	150AT, 3P, 230V, MCCB	3-50.0	3-50.0	1B, 1Y		
2	DISTRIBUTION PANEL	1	1960	230			3.70	150AT, 3P, 230V, MCCB	3-50.0	3-50.0	1B, 1Y		
3	DISTRIBUTION PANEL	1	1960	230			3.70	150AT, 3P, 230V, MCCB	3-50.0	3-50.0	1B, 1Y		
4	DISTRIBUTION PANEL	1	1720	230			2.95	150AT, 3P, 230V, MCCB	3-50.0	3-50.0	1B, 1Y		
5	LIGHTING C	1	2000	230			2.0	15AT, 2P, 230V, MCCB	2-2.0	2-2.0	1R, 1B		
TOTAL			8000	230			9	300AT, 3P, 230V, MCCB	3-175.0	3-175.0	1B, 1Y		

NOTE:
 1- Means Ground Wire
 1R- Color RED
 1B- Color BLACK
 1Y- Color YELLOW
 1G- Color GREEN

This Electrical Design is good only for the above connected loads. Any additional electrical load connection in the future is not allowed. Except red line, any additional electrical load connection in the future will be done.

PANEL: 1 (DISTRIBUTION PANEL 1)
 PHASE: 3
 VOLTS: 230

CABLE: 3 - 50.0 SQMM THHN-1 - 14.0 SQMM THW
 CONDUIT: IMC, 40 MM DIA.

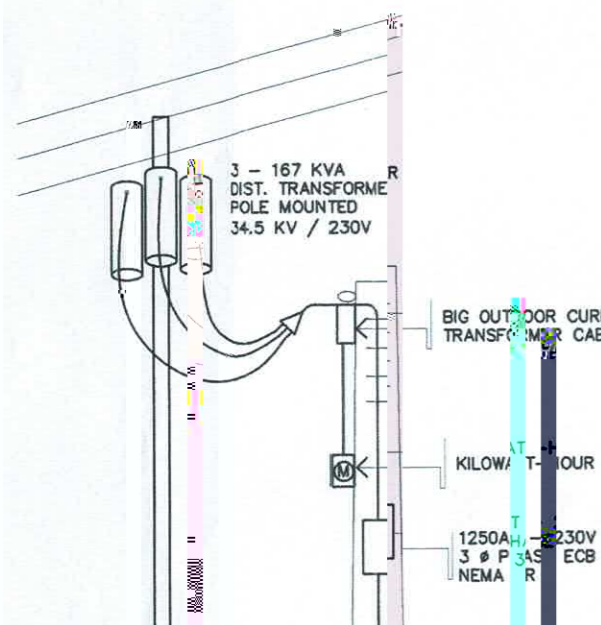
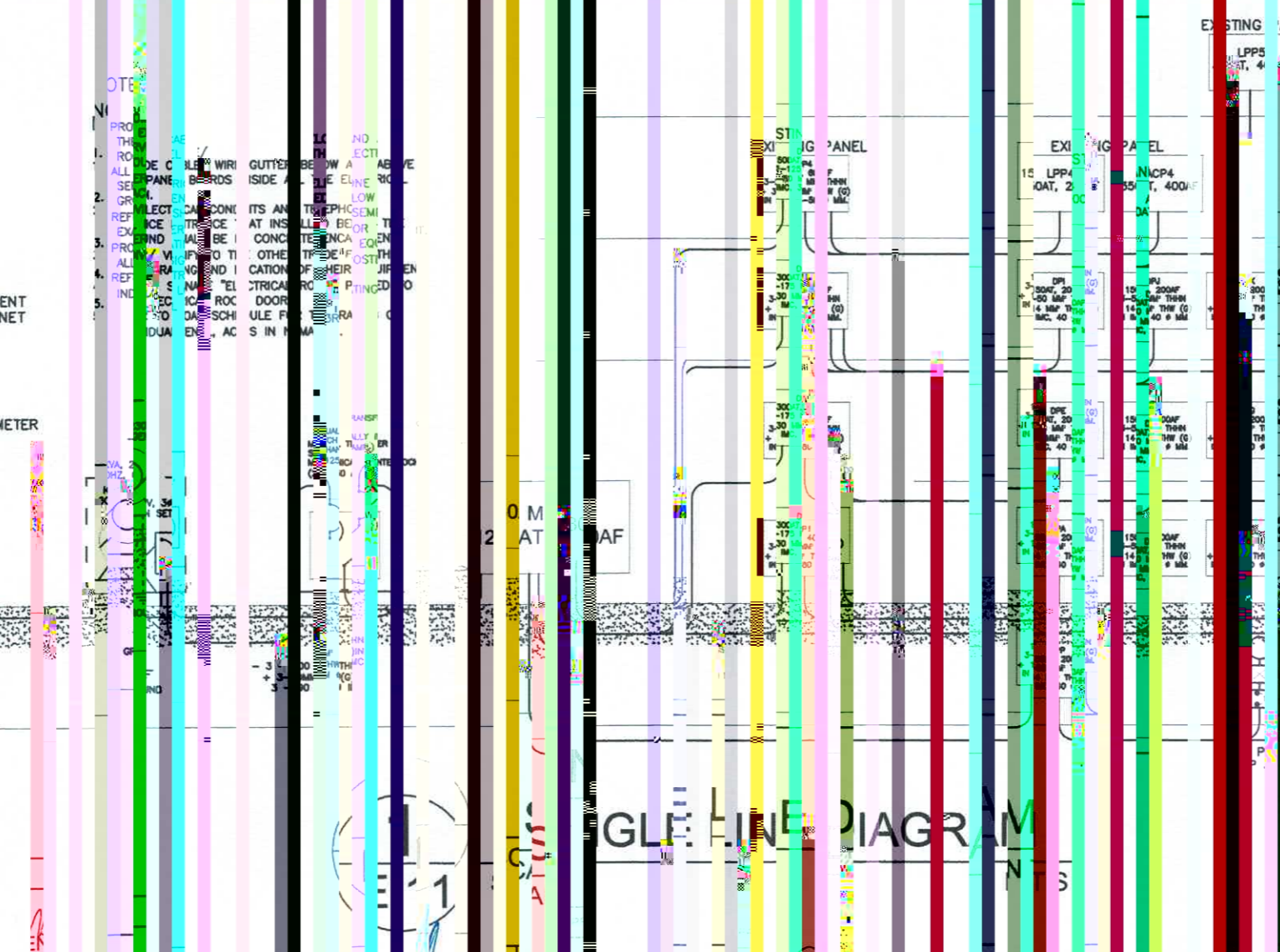
ENCLOSURE: NEMA 1
 MOUNTING: SURFACE

CKT NO.	CIRCUIT DESCRIPTION	NO OF OUTLET	WATTAGE	VOLTAGE	LOAD IN RATING			CIRCUIT PROTECTION			Size of Conductor SQ. MM THW (G)	Size of Conduit in Me	Color Code
					AB	CA	BC	CIRCUIT BREAKER RATING	SQ. MM THHN	SQ. MM THW (G)			
1	LIGHTING OUTLET	1	1800	30			8.26	15AT, 2P, 230V, MCCB	2.0	2.0	1R, 1B		
2	LIGHTING OUTLET	1	1800	30			8.26	15AT, 2P, 230V, MCCB	2.0	2.0	1R, 1B		
3	CONVENIENCE OUTLET	1	1400	30			2.0	15AT, 2P, 230V, MCCB	1.0	1.0	1R, 1B		
4	CONVENIENCE OUTLET	1	1000	30			2.0	15AT, 2P, 230V, MCCB	1.0	1.0	1R, 1B		
5	AGU POWER OUTLET	1	3000	30			23	50AT, 2P, 230V, MCCB	3.0	3.0	1B, 1Y		
6	AGU POWER OUTLET	1	3000	30			23	50AT, 2P, 230V, MCCB	3.0	3.0	1B, 1Y		
7	AGU POWER OUTLET	1	3000	30			23	50AT, 2P, 230V, MCCB	3.0	3.0	1B, 1Y		
8	AGU POWER OUTLET	1	3000	30			23	50AT, 2P, 230V, MCCB	3.0	3.0	1B, 1Y		
TOTAL			17600	30			46	150AT, 3P, 230V, MCCB	3.0	3.0	1B, 1Y		

NOTE:
 1- Means Ground Wire
 1R- Color RED
 1B- Color BLACK
 1Y- Color YELLOW
 1G- Color GREEN

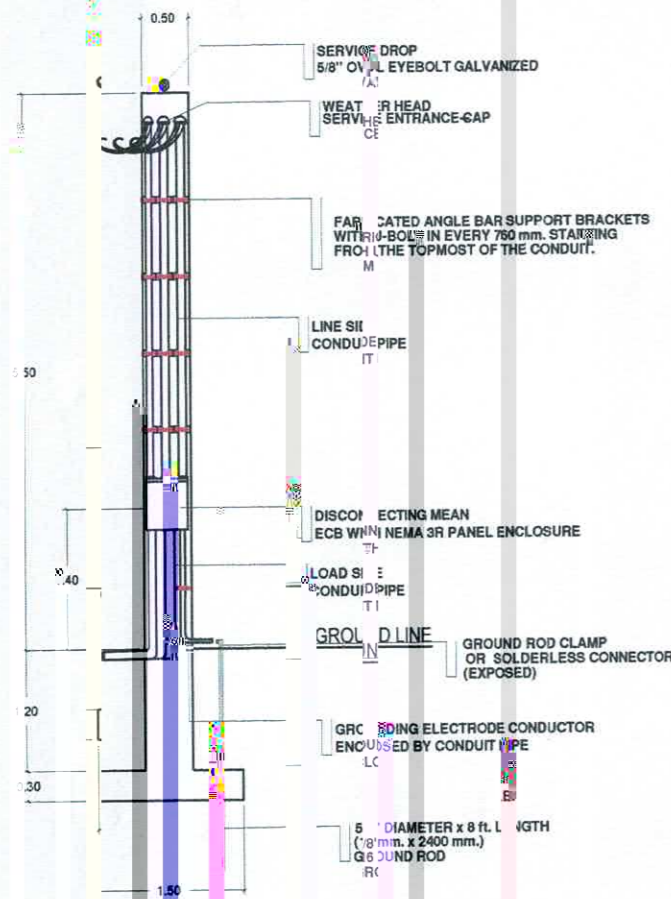
This Electrical Design is good only for the above connected loads. Any additional electrical load connection in the future is not allowed. Except red line, any additional electrical load connection in the future will be done.

PANEL : MDP (MAIN DISTRIBUTION PANEL)			CABLE 3 - 3 - 300.0 SQMM THHN- 3 - 50.0 SQMM THW				MAIN: 1250 AT, 1300 AF, 3P, 230V, MCCB						
PHASE: 3			CONDUIT: IMC, 3 - 90 MM DIA.				ENCLOSURE: NEMA 1						
VOLTS: 230			LOCATION: HALLWAY, GROUND FLOOR				MOUNTING: SURFACE						
CKT NO.	CIRCUIT DESCRIPTION	PANEL	VOLT-AMP	VOLT	LOAD RATING			CIRCUIT BREAKER RATING	SQ. MM THW (G)	Size of Conduit in MM ϕ	Color Code		
					3 ϕ	AB	CA					BC	
1	DISTRIBUTION PANEL 1	DP1	76000	230	0	167	174	188	300AT, 230V, MCCB	3 - 175	G 30.0	MC, 80	1R,1B,1Y, G
2	DISTRIBUTION PANEL 2	DP2	78900	230	0	184	159	159	300AT, 230V, MCCB	3 - 175	G 30.0	MC, 80	1R,1B,1Y, G
3	DISTRIBUTION PANEL 3	DP3	81500	230	0	168	184	167	300AT, 230V, MCCB	3 - 175	G 30.0	MC, 80	1R,1B,1Y, G
4	DISTRIBUTION PANEL 4	DP4	139388	230	0	304	314	309	500 AT, 230V, MCCB	3 - 2 - 175	G 3 - 50.0	MC, 80	1R,1B,1Y, G
5	FIRE PROTECTION PANEL	FPP	21900	230	54	17	17	17	150 AT, 230V, MCCB	3 - 50	G 14	MC, 25	1R,1B,1Y, G
6	ELEVATOR PANEL	ELP	7460	230	22				50 AT, 230V, MCCB	3 - 8	G 5.5	MC, 25	1R,1B,1Y, G
7	FIRE DETECTION ALARM SYSTEM	FD	500	230	0			2	15 AT, 230V, MCCB	2 - 2	G 3.2	MC, 25	1R,1B,1Y, G
	SPARE												
TOTAL			405000	230	76	640	647	837	1250 AT, 230V, MCCB	3 - 3 - 30	G 3 - 50	MC, 80	1R,1B,1Y, G

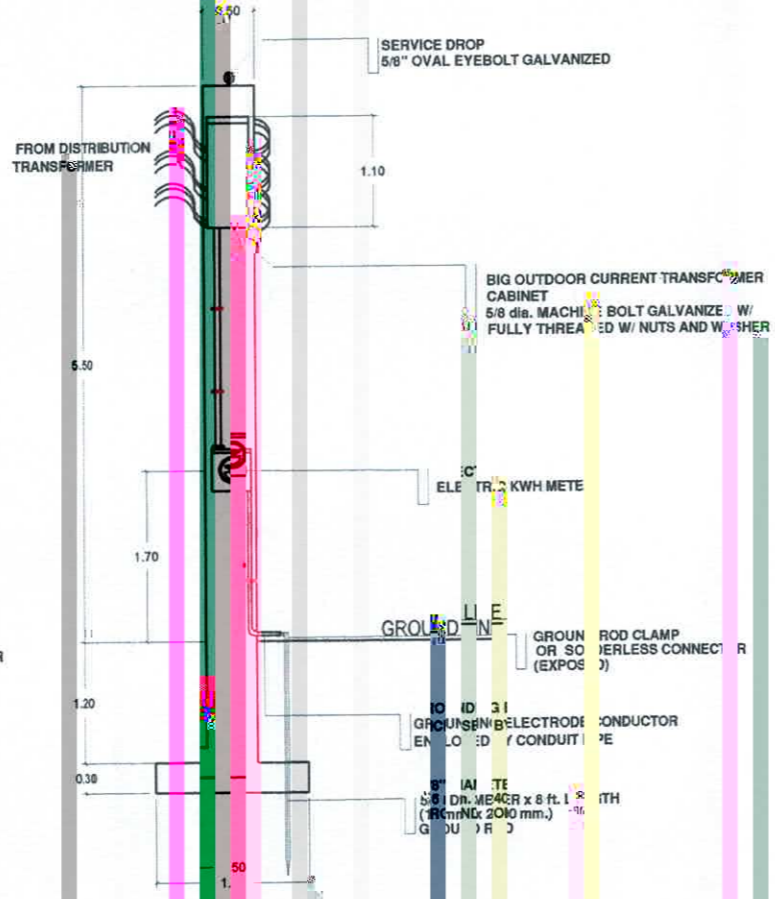


PREPARED BY: R. J. R. POU	DESIGNED BY: ANCHEZ OVPPD	CHECKED BY: R. M. AJMAL	REVIEWED BY: R. P. PE	DATE: 10/10/2011	PROJECT: ELECTRICAL POWER SYSTEM FOR FIVE BUILDING AT CVSU BACOR CAMPUS	IMPLEMENTING AGENCY: CAVI STATE UNIVERSITY	HT NO: E - 11
---------------------------	---------------------------	-------------------------	-----------------------	------------------	---	--	---------------

FRONT VIEW



REAR VIEW

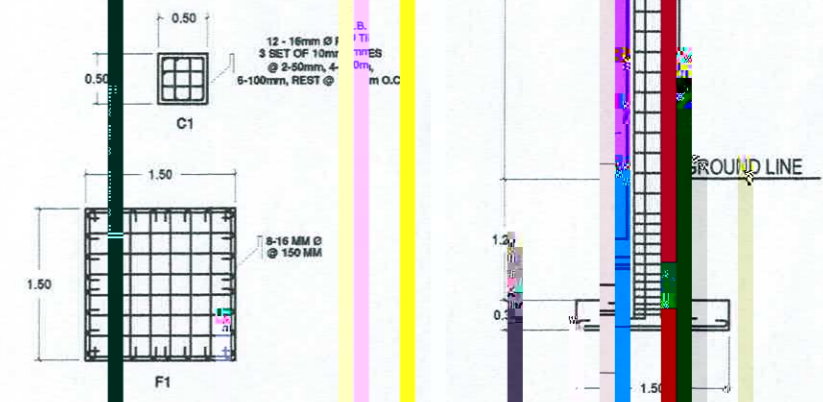


SCHEDULE OF FOOTINGS

NAME	TYPE	THICKNESS	SIZE (LxW)	DEPTH	REINFORCEMENT	
					ALONG L	ALONG W
F1	ISOLATED	300 MM	1500 x 1500 MM	1000 MM	8-16 MM Ø @ 150 MM	8-16 MM Ø @ 150 MM

COLUMN	DIMENSIONS	REINFORCEMENT	NO. OF TIES & SPACING
C1	500 MM X 500 MM	12 - 16mm Ø F.B.	3 SET OF 10mm Ø TIES @ 2-50mm, 4-75mm, 4-100mm, REST @ 200mm C

COLUMN DETAILS

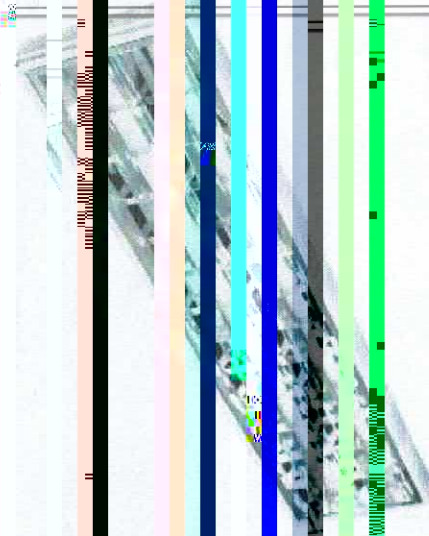


1
E-12

SERVICE ENTRANCE CONCRETE PEDESTAL DETAILS

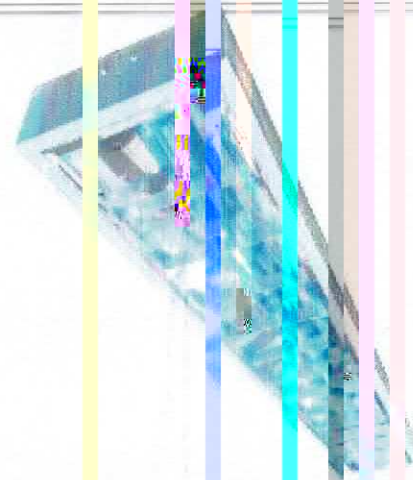
1:75 FT.

PREPARED BY: R. J. SANCHEZ PROJECT MANAGER	END USER: R. SANCHEZ CAMPUS ADMINISTRATION	REVIEWED BY: R. PENNA PROFESSIONAL ENGINEER	CHECKED BY: S. BAYOT JR. PROJECT MANAGER	DESIGNED BY: B. LOS REYES PROJECT MANAGER	APPROVED BY: M. J. TERPICO PROJECT MANAGER	APPROVED BY: B. NE... PROJECT MANAGER	PROJECT TITLE/LOCATION: IMPROVEMENT OF ELECTRICAL POWER SYSTEM OF FIVE STORY ACADEMIC BUILDING ON CAMPUS	PREPARING AGENCY: CALIFORNIA STATE UNIVERSITY	SHEET NO.: E - 12
---	---	--	---	--	---	--	---	--	----------------------



2-8W LED TUBE LIGHT WITH DIFFUSER,
4 FT. LENGTH (FL)

1
E-13
SCALE



1-8W LED TUBE LIGHT WITH DIFFUSER,
4 FT. LENGTH (FL)

2
E-13
SCALE



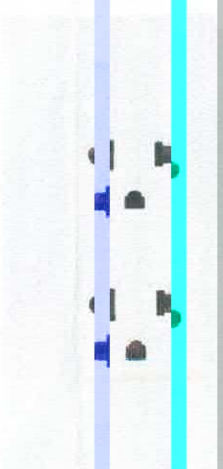
2 WATTS LED DOWNLIGHT WITH
SURFACE TYPE ROUND CASING

3
E-13
SCALE



EMERGENCY LIGHT TWIN HEAD

4
E-13
SCALE



TWO-GANG CONVENIENCE OUTLET
UNIVERSAL TYPE WITH GROUND

5
E-13
SCALE



PREPARED BY: R. J. R. SANCHEZ PDU OVPPD	DESIGNER: M. S. MACALALAD CAMPUS ADMINISTRATOR CVSU BACOR	REVIEWED BY: R. D. PENA PROF. ELEC. ENGINEER	ENDORSED BY: S. B. BAYOT JR. HEAD PDU	ENDORSED BY: O. B. DELOS RILES DIRECTOR PLANNING AND DEVT. OFFICE	REC. APPROVAL: A. G. MAGAWAS VPPD CVSU	APPROVED BY: J. X. NEOMUCENO VPASS CVSU	APPROVED BY: H. D. ROBLES PRES CVSU	PROJECT TITLE/LOCATION: IMPROVEMENT OF ELECTRICAL POWER SYSTEM OF FIVE STOREY ACADEMIC BUILDING AT CVSU BACOR CAMPUS CAVITE STATE UNIVERSITY BACOR CAMPUS	IMPLEMENTING AGENCY: CAVITE STATE UNIVERSITY	SHEET NO: E - 13
--	--	--	--	--	---	--	--	---	---	---------------------